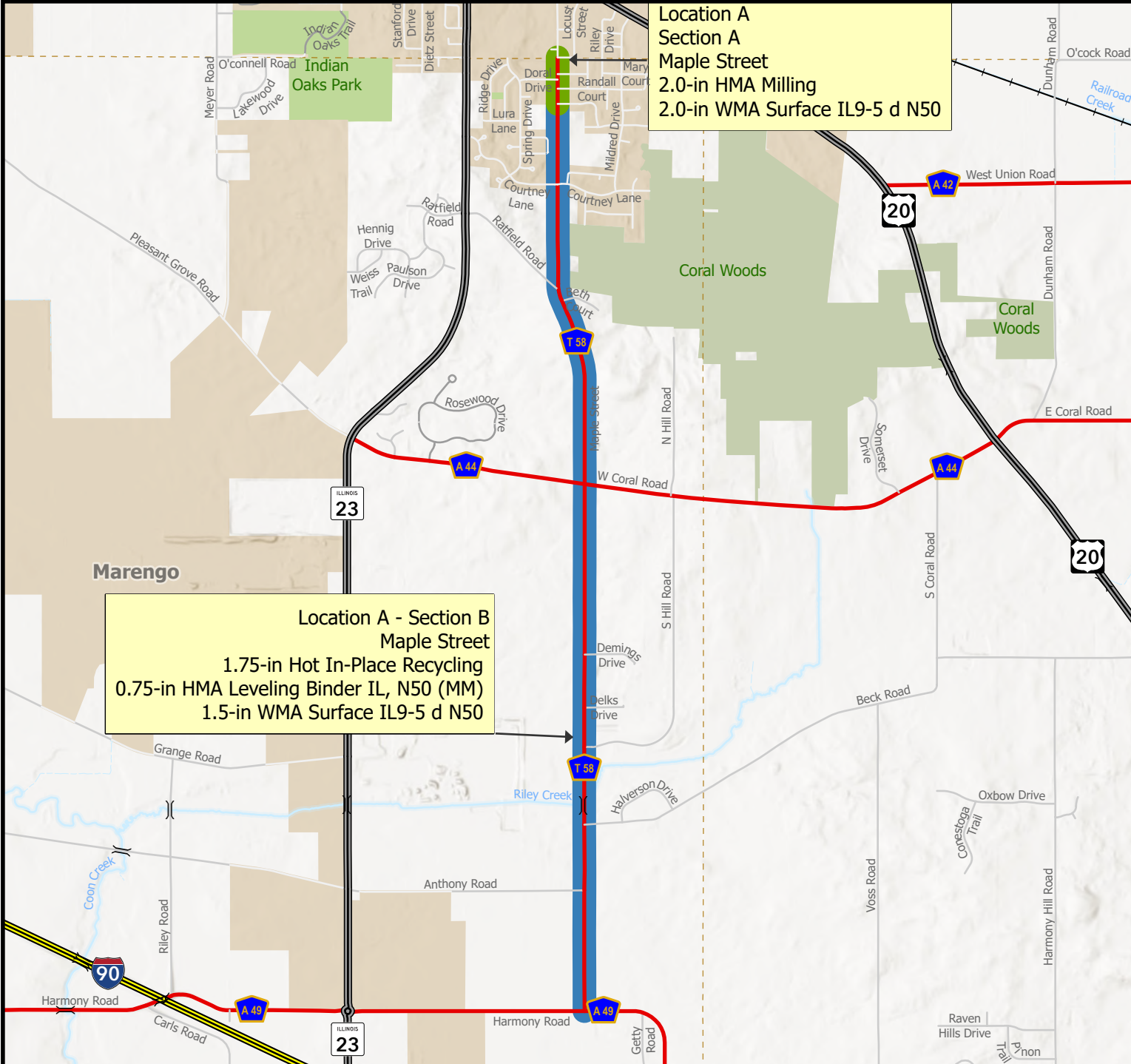


2026 Paving - Location "A"

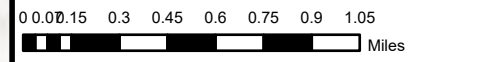
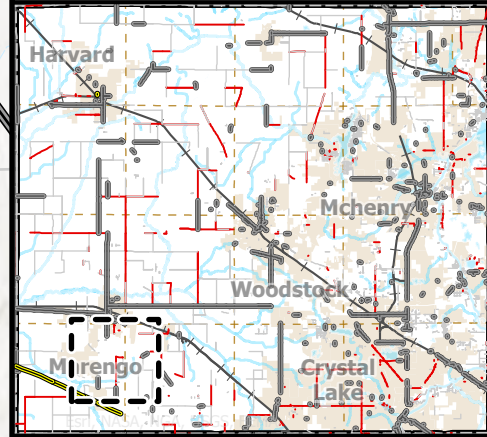
Maple Street



Location A
Section A
Maple Street
 2.0-in HMA Milling
 2.0-in WMA Surface IL9-5 d N50

Location A - Section B
Maple Street
 1.75-in Hot In-Place Recycling
 0.75-in HMA Leveling Binder IL, N50 (MM)
 1.5-in WMA Surface IL9-5 d N50

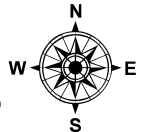
- Roadway System**
- Township Boundry
 - River/Stream/Creek
 - County
 - Interstate
 - State/US Route
 - Municipality
 - Township
 - Private, Other
 - Railroad
 - Conservation Area
 - Park
 - Marengo
- Extras**
- Section A
 - Section B
- Basemapping**
- County Boundry



Date
 Exported: 1/2/2026 10:33 AM

Projection
 Spatial Reference
 Name: NAD 1983 StatePlane Illinois East FIPS 1201 Feet
 Projection: Transverse Mercator

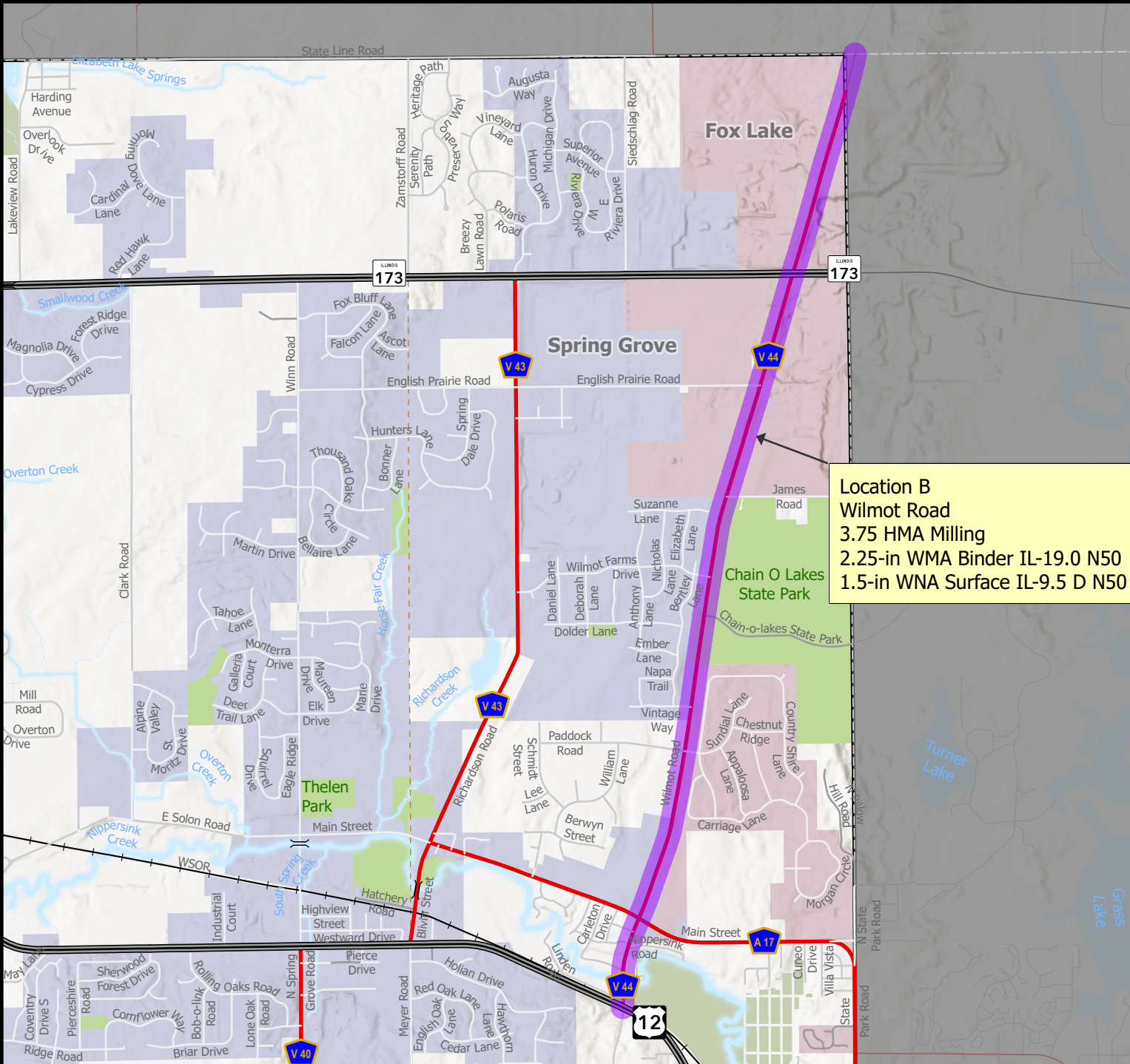
File
 O:\MCDOTGIS\Current Work\Pavement Preservation Program\2026\McHenry County Paving 2026



Disclaimer
 Information on this map may contain inaccuracies or typographical errors. Information may be changed or updated without notice. Information on this map is provided "as-is" without warranty of any kind, either express or implied, including (without limitation) any implied warranties of merchantability or fitness for a particular purpose. In no event will McHenry County be liable to you or to any third party for any direct, indirect, incidental, consequential, special or exemplary damages or lost profit resulting from any use or misuse of this information. Information herein has been reproduced from original sources. Information produced on this map should not be used in place of a survey or legal documents.

2026 County Paving - Location "B"

Wilmot Road



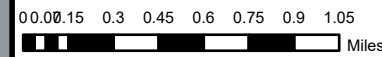
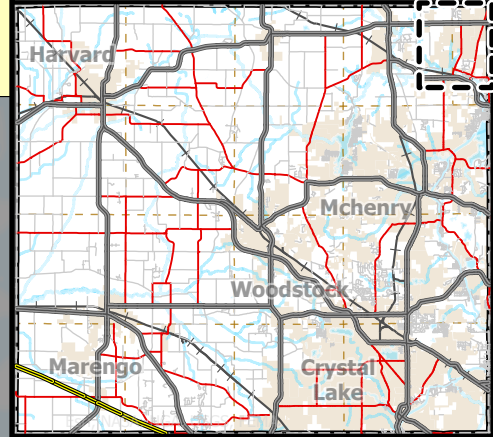
Location B
Wilmot Road
 3.75 HMA Milling
 2.25-in WMA Binder IL-19.0 N50
 1.5-in WNA Surface IL-9.5 D N50

Roadway System

- Bridges
- County
- State/US Route
- Municipality
- Township
- Private, Other
- Railroad

Basemapping

- County Boundary
- Township Boundary
- Lakes/Ponds
- River/Stream/Creek
- Intermittent Stream
- Conservation Area
- Park
- Fox Lake
- Spring Grove
- County Paving



Date
 Exported: 12/11/2025 10:54 AM

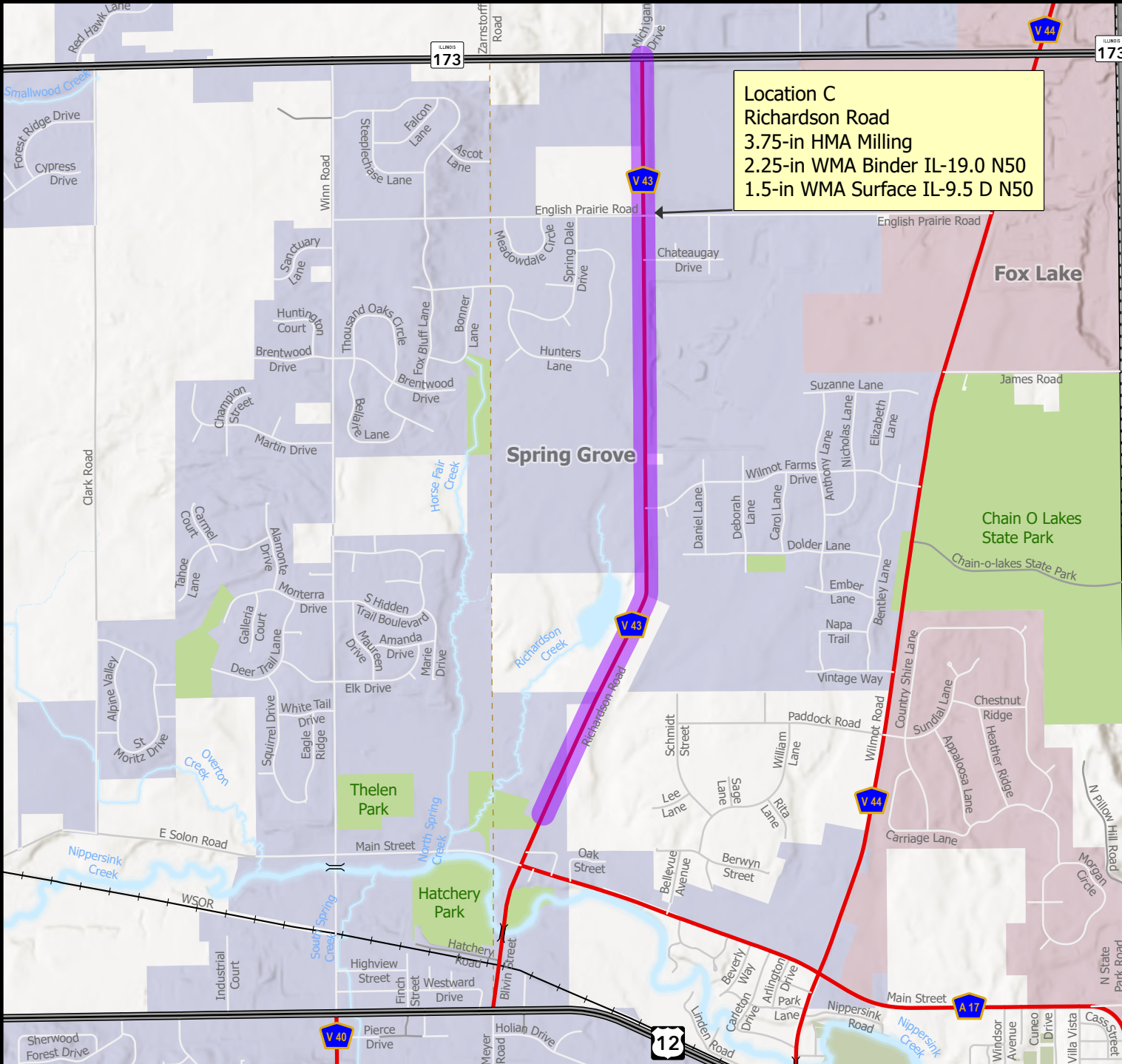
Projection
 Spatial Reference
 Name: NAD 1983 StatePlane Illinois East FIPS 1201 Feet
 Projection: Transverse Mercator

File
 G:\MCDOTGIS\Current Work\Pavement Preservation Program\2026\McHenry County Paving 2026

Disclaimer
 Information on this map may contain inaccuracies or hypographical errors. Information may be changed or updated without notice. Information on this map is provided "as-is" without warranty of any kind, either express or implied, including (without limitation) any implied warranties of merchantability or fitness for a particular purpose. In no event will McHenry County be liable to you or to any third party for any direct, indirect, consequential, special or exemplary damages or lost profit resulting from any use or misuse of this information. Information herein has been reproduced from original sources. Information produced on this map should not be used in place of a survey or legal documents.

2026 County Paving - Location "C"

Richardson Road



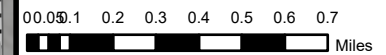
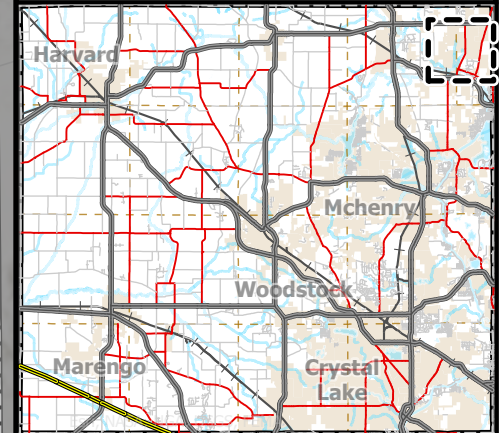
Location C
 Richardson Road
 3.75-in HMA Milling
 2.25-in WMA Binder IL-19.0 N50
 1.5-in WMA Surface IL-9.5 D N50

Roadway System

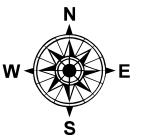
- Bridges
- County
- State/US Route
- Municipality
- Township
- Private, Other
- Railroad

Basemapping

- County Boundary
- Township Boundary
- Lakes/Ponds
- River/Stream/Creek
- Intermittent Stream
- Conservation Area
- Park
- Fox Lake
- Spring Grove
- County Paving



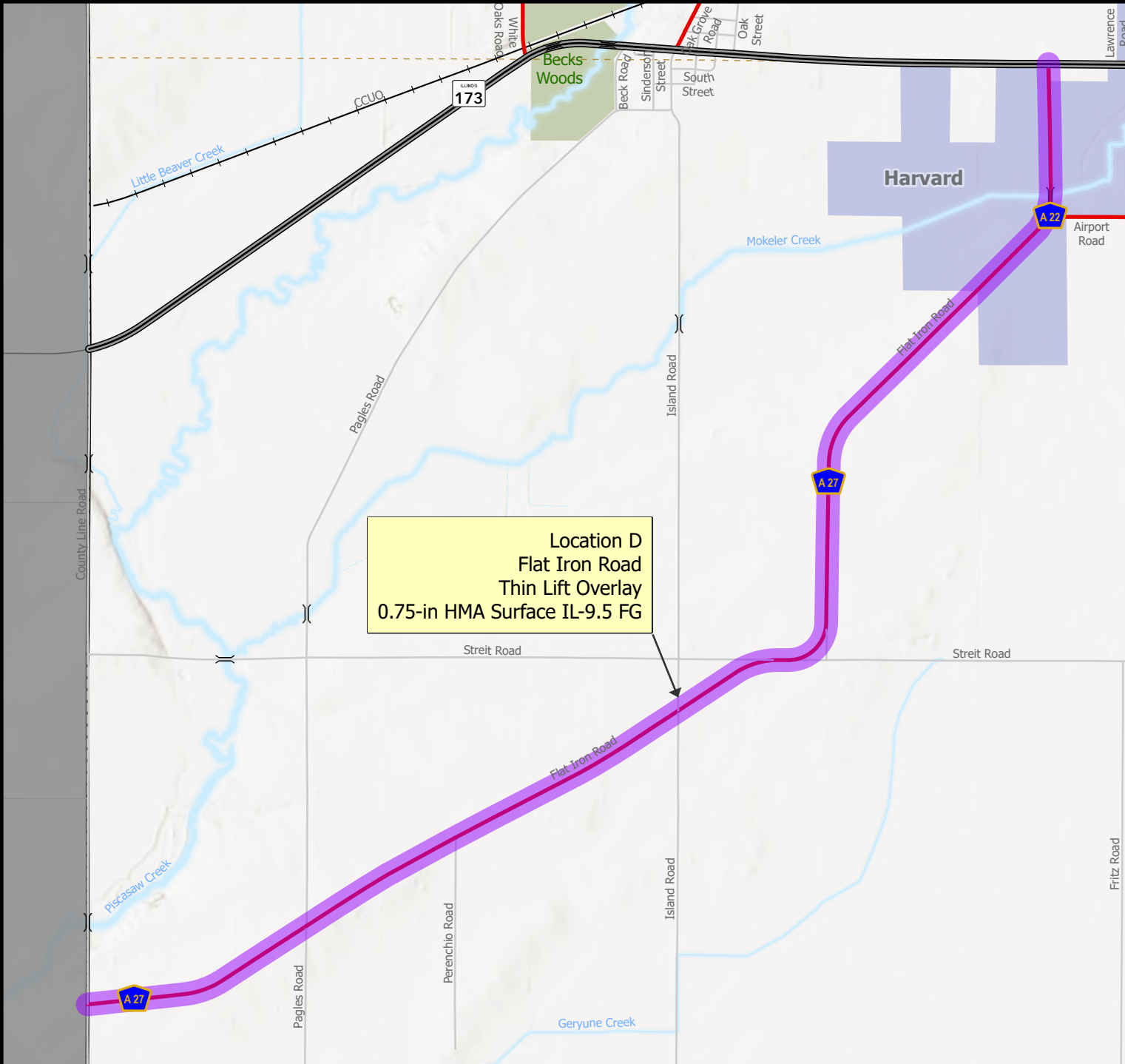
Date
 Exported: 12/11/2025 2:35 PM
Projection
 Spatial Reference
 Name: NAD 1983 StatePlane Illinois East FIPS 1201 Feet
 Projection: Transverse Mercator
File
 G:\MCDOTGIS\Current Work\Pavement Preservation Program\2026\McHenry County Paving 2026



Disclaimer
 Information on this map may contain inaccuracies or typographical errors. Information may be changed or updated without notice. Information on this map is provided "as-is" without warranty of any kind, either express or implied, including (without limitation) any implied warranties of merchantability or fitness for a particular purpose. In no event will McHenry County be liable to you or to any third party for any direct, indirect, incidental, consequential, special or exemplary damages or lost profit resulting from any use or misuse of this information. Information herein has been reproduced from original sources. Information produced on this map should not be used in place of a survey or legal documents.

2026 County Paving - Location "D"

Flat Iron Road



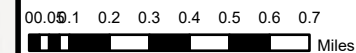
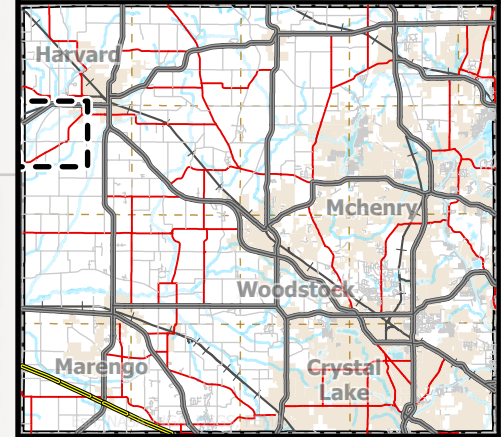
Location D
Flat Iron Road
Thin Lift Overlay
0.75-in HMA Surface IL-9.5 FG

Roadway System

- Bridges
- County
- State/US Route
- Township
- Private, Other
- Railroad

Basemapping

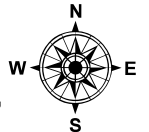
- County Boundry
- Township Boundry
- Lakes-Ponds
- River/Stream/Creek
- Intermittent Stream
- Conservation Area
- Park
- Harvard
- County Paving



Date
Exported: 12/11/2025 10:46 AM

Projection
Spatial Reference
Name: NAD 1983 StatePlane Illinois East FIPS 1201 Feet
Projection: Transverse Mercator

File
O:\MCDOTGIS\Current Work\Pavement Preservation Program\2026\Mchenry County Paving 2026



Disclaimer
Information on this map may contain inaccuracies or hypographical errors. Information may be changed or updated without notice. Information on this map is provided "as is" without warranty of any kind, either express or implied, including (without limitation) any implied warranties of merchantability or fitness for a particular purpose. In no event will McHenry County be liable to you or to any third party for any direct, indirect, incidental, consequential, special or exemplary damages or lost profit resulting from any use or misuse of this information. Information herein has been reproduced from original sources. Information produced on this map should not be used in place of a survey or legal documents.