



MEMORANDUM

To: Ben Dykema
ECA Solar

From: Sarah Skowronski
Kimley-Horn and Associates, Inc.

Date: October 28, 2025

Subject: Woodstock Community Energy Initiative, LLC
Due Diligence Tree Survey & Technical Memorandum

INTRODUCTION

ECA Solar has engaged Kimley-Horn and Associates, Inc. (Kimley-Horn) to perform a comprehensive tree survey per the request of the Zoning Board of Appeals (ZBA) Board Members for projects located in unincorporated McHenry County. While there are no dedicated tree preservation ordinances enforced in unincorporated McHenry County, several documents produced by the local conservation authorities have been reviewed and determined how they shall apply in this project. The property (Parcel ID Number: 07-36-326-003) is located in McHenry County, Illinois, south of US Route 14. The property is currently zoned A1, Agricultural, and is a vacant agricultural field.

On September 30 & October 2, 2025, a certified arborist conducted an inventory of all viable trees on the subject property with a Diameter at Breast Height (DBH) of 3 inches or greater, documenting species, size, and general health condition. The arborist's assessment provides the necessary technical basis for site planning and regulatory decisions. Enclosed you will find a summary table of the tree survey (**Attachment A**) and georeferenced digital files in a .kmz format.

SUMMARY OF FINDINGS:

Tree Survey Procedures

Sarah Skowronski, ISA Certified Arborist, Cert-ID IL-9854A, conducted a tree survey on September 30 & October 2, 2025, for the purposes of identifying viable trees. The survey protocol included inventory of all trees with a DBH of 3 inches or greater, excluding invasive species such as *Rhamnus cathartica* (Buckthorn) and *Lonicera mackii/tartarica* (Honeysuckle spp).

For multistem trees, the total DBH was calculated by measuring the DBH of the dominant stem and adding 50% of the DBH of each additional stem to this value. Tree condition was measured as good, fair, poor, or dead, based upon a visual evaluation of the tree individual's health at the time of the survey.

In alignment with McHenry County's conservation priorities as outlined in the McHenry County Conservation District's Natural Areas Protection Guide and the Oaks of McHenry County addendum, special attention was given to oak and hickory species during the survey.

The tree survey area was limited to the land of development (LOD) and proposed tree clearing areas. A summary of trees identified as meeting survey requirements and their associated species and condition is included below in **Table 1**. A total of 512 trees were identified with DBH values greater than or equal to 3 inches. **Figure 1** summarizes the location of all trees surveyed within the limits of the tree clearing activity and **Attachment A** lists all surveyed trees with their associated attributes.

Of the identified trees, **9 trees are considered of note to McHenry County**. The criteria to define this are those of oak and hickory species of fair or good quality with DBHs greater than 12 inches. This criterion was established due to the significant contributions of the older individuals of this species subset to the McHenry County ecosystem.

Other notable species are also called out in **Table 1**. These include oak and hickory individuals with DBH values less than 12 inches and other higher quality species. Trees considered as an invasive species, such as *Rhamnus cathartica* (Buckthorn) and *Lonicera maackii* (Honeysuckle), are not included.

Table 1: Tree Survey Summary

Trees Meeting Protocol Requirements	Total Number of Trees Surveyed & Proposed for Removal	Total Number of Trees in Good or Fair Condition	Total Number of Trees in Poor or Dead Condition
Oaks & Hickories with DBH Values 12 Inches or Greater	12	9	3
Notable Species - (Oaks & Hickories with DBH Values Less Than 12 Inches, Elms)	32	19	13
Other Species Surveyed	468	318	150
Total	512	346	166

Tree Preservation & Removal Plan Requirements

At this time, based on publicly available information, McHenry County does not have an active tree preservation ordinance or removal requirement. This tree survey was conducted for due diligence purposes on request of the Zoning Board of Appeals (ZBA).

While formal approval is not mandated, McHenry County encourages property owners to retain mature trees, with an emphasis on native species such as oak and hickory species. When tree removal is necessary it is recommended to document the tree's condition and to consider replacement or mitigation. In cases where tree replacement is feasible, McHenry County guidelines suggest planting native, non-invasive tree species with a minimum caliper of two inches.

CONCLUSIONS AND RECOMMENDATIONS:

Based on the information reviewed, Kimley-Horn has identified 12 trees that are oak or hickory species that contribute to a larger ecosystem identified as of importance to McHenry County. Of these 12 trees, 9 were of good or fair condition. A .kmz file of all 512 surveyed trees and all associated information has been included. Recommendations for replacements can be provided upon request.

Legend

- Oaks & Hickories - equal to or greater 12in DBH
- Oaks & Hickories - less than 12in DBH
- Other Species
- Tree Clearing Boundary
- Study Area

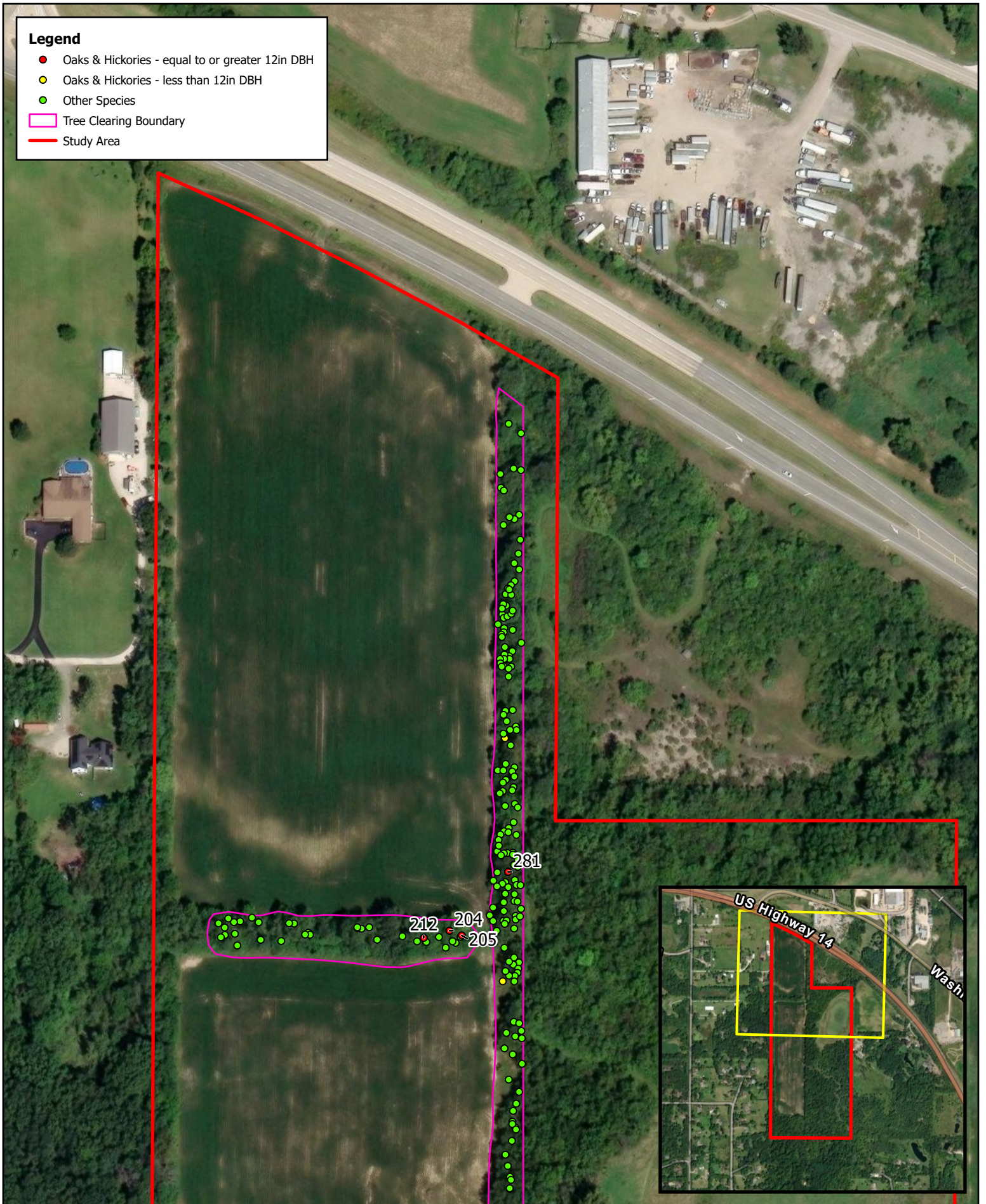
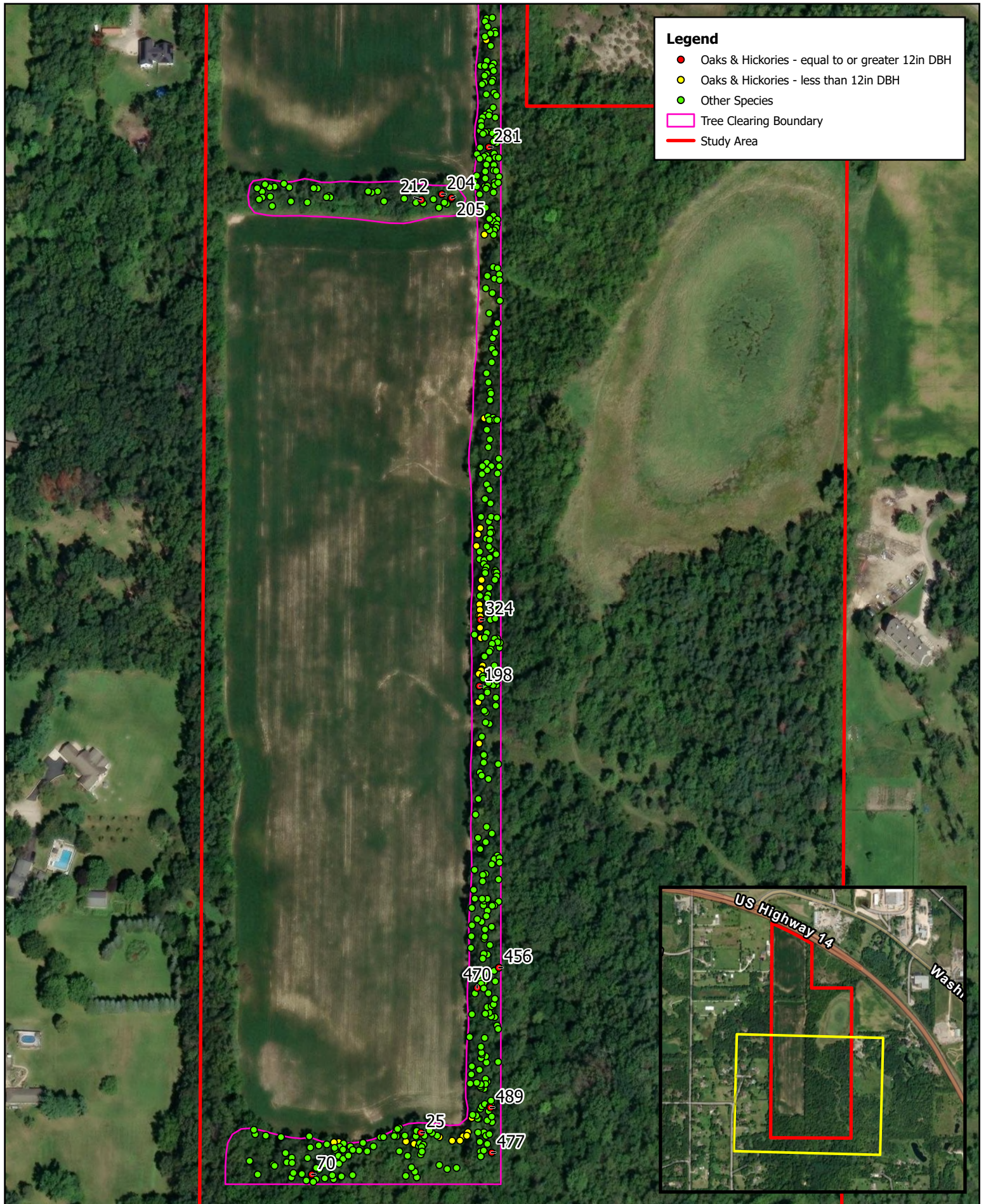


Figure 1.1 Tree Clearing Map
Hartland Township, McHenry County
ECA Solar



Legend

- Oaks & Hickories - equal to or greater 12in DBH
- Oaks & Hickories - less than 12in DBH
- Other Species
- Tree Clearing Boundary
- Study Area

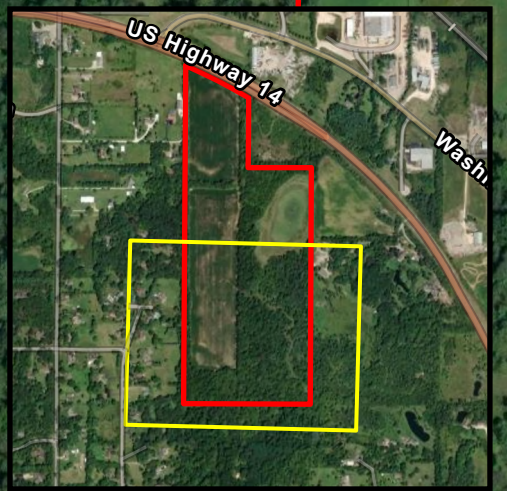


Figure 1.2 Tree Clearing Map
 Hartland Township, McHenry County
 ECA Solar

ATTACHMENT A

Tree Survey Table

OBJECTID	SPECIES-COMMON	DBH	CONDITION
1	ASH-GREEN	14	POOR
2	CHERRY-BLACK	6	POOR
3	ASH-GREEN	8	POOR
4	ASH-GREEN	16	POOR
5	WALNUT-BLACK	9	POOR
6	CHERRY-BLACK	22	POOR
7	CHERRY-BLACK	19	POOR
8	CHERRY-BLACK	14	POOR
9	CHERRY-BLACK	12	POOR
10	CHERRY-BLACK	21	POOR
11	CHERRY-BLACK	16	POOR
12	CHERRY-BLACK	18	POOR
13	WALNUT-BLACK	3	FAIR
14	WALNUT-BLACK	5	POOR
15	WALNUT-BLACK	3	POOR
16	WALNUT-BLACK	6	POOR
17	WALNUT-BLACK	7	POOR
18	CHERRY-BLACK	6	FAIR
19	CHERRY-BLACK	7	POOR
20	CHERRY-BLACK	10	FAIR
21	WALNUT-BLACK	9	FAIR
22	OAK-RED	7	FAIR
23	CHERRY-BLACK	10	FAIR
24	CHERRY-BLACK	14	FAIR
25	OAK-RED	13	POOR
26	MAPLE-BOXELDER	9	FAIR
27	CHERRY-BLACK	10	POOR
28	OAK-WHITE	6	POOR
29	CHERRY-BLACK	18	FAIR
30	MULBERRY-RED	8	FAIR
31	MULBERRY-RED	5	FAIR
32	MULBERRY-RED	3	FAIR
33	MULBERRY-RED	10	FAIR
34	CHERRY-BLACK	6	FAIR
35	CHERRY-BLACK	8	POOR
36	WALNUT-BLACK	7	FAIR
37	WALNUT-BLACK	12	FAIR
38	WALNUT-BLACK	13	POOR
39	CHERRY-BLACK	7	POOR
40	WALNUT-BLACK	8	POOR
41	CHERRY-BLACK	14	FAIR
42	CHERRY-BLACK	8	FAIR
43	CHERRY-BLACK	4	FAIR
44	CHERRY-BLACK	4	FAIR
45	CHERRY-BLACK	8	FAIR
46	OAK-WHITE	4	FAIR
47	OAK-RED	5	FAIR
48	CHERRY-BLACK	7	FAIR
49	CHERRY-BLACK	17	POOR
50	WALNUT-BLACK	11	POOR
51	WALNUT-BLACK	12	POOR
52	WALNUT-BLACK	9	POOR
53	WALNUT-BLACK	6	FAIR
54	WALNUT-BLACK	6	FAIR
55	WALNUT-BLACK	4	FAIR
56	WALNUT-BLACK	6	FAIR
57	CHERRY-BLACK	16	FAIR
58	CHERRY-BLACK	16	POOR
59	WALNUT-BLACK	14	FAIR
60	WALNUT-BLACK	4	FAIR
61	WALNUT-BLACK	7	FAIR

62	WALNUT-BLACK	5	FAIR
63	WALNUT-BLACK	6	FAIR
64	CHERRY-BLACK	5	FAIR
65	CHERRY-BLACK	11	FAIR
66	CHERRY-BLACK	3	POOR
67	WALNUT-BLACK	10	FAIR
68	CHERRY-BLACK	5	FAIR
69	ASH-WHITE	8	FAIR
70	OAK-RED	14	FAIR
71	CHERRY-BLACK	12	FAIR
72	CHERRY-BLACK	24	FAIR
73	WALNUT-BLACK	10	FAIR
74	WALNUT-BLACK	10	FAIR
75	WALNUT-BLACK	9	FAIR
76	OAK-RED	5	FAIR
77	MULBERRY-RED	12	FAIR
78	OAK-RED	3	POOR
79	OAK-RED	9	FAIR
80	OAK-RED	8	FAIR
81	CHERRY-BLACK	34	POOR
82	OAK-RED	10	POOR
83	OAK-RED	8	FAIR
84	OAK-RED	11	FAIR
85	CHERRY-BLACK	3	FAIR
86	CHERRY-BLACK	8	POOR
87	MAPLE-BOXELDER	3	FAIR
88	CHERRY-BLACK	9	POOR
89	MULBERRY-SPP	15	FAIR
90	CHERRY-BLACK	12	FAIR
91	CHERRY-BLACK	7	POOR
92	CHERRY-BLACK	6	FAIR
93	ELM-AMERICAN	6	FAIR
94	SPRUCE-SPP	3	FAIR
95	CHERRY-BLACK	5	FAIR
96	CHERRY-BLACK	5	FAIR
97	CHERRY-BLACK	4	FAIR
98	CHERRY-BLACK	3	FAIR
99	MAPLE-BOXELDER	14	FAIR
100	CHERRY-BLACK	14	DEAD
101	CHERRY-BLACK	16	FAIR
102	CHERRY-BLACK	18	FAIR
103	CHERRY-BLACK	15	FAIR
104	WALNUT-BLACK	6	POOR
105	CHERRY-BLACK	6	FAIR
106	CHERRY-BLACK	4	FAIR
107	CHERRY-BLACK	6	FAIR
108	CHERRY-BLACK	3	FAIR
109	CHERRY-BLACK	3	FAIR
110	CHERRY-BLACK	3	FAIR
111	CHERRY-BLACK	6	POOR
112	MULBERRY-RED	6	FAIR
113	MULBERRY-RED	3	FAIR
114	MULBERRY-RED	4	FAIR
115	CHERRY-BLACK	28	POOR
116	CHERRY-BLACK	6	POOR
117	CHERRY-BLACK	8	POOR
118	CHERRY-BLACK	32	DEAD
119	CHERRY-BLACK	3	FAIR
120	CHERRY-BLACK	5	FAIR
121	CHERRY-BLACK	6	FAIR
122	CHERRY-BLACK	3	FAIR
123	MULBERRY-RED	5	FAIR

124	CHERRY-BLACK	10	FAIR
125	MULBERRY-RED	4	FAIR
126	CHERRY-BLACK	4	FAIR
127	CHERRY-BLACK	9	FAIR
128	CHERRY-BLACK	4	FAIR
129	CHERRY-BLACK	3	POOR
130	CHERRY-BLACK	6	POOR
131	MULBERRY-RED	10	FAIR
132	CEDAR-RED	3	FAIR
133	CHERRY-BLACK	6	FAIR
134	MAPLE-BOXELDER	4	FAIR
135	MULBERRY-RED	4	FAIR
136	CHERRY-BLACK	32	POOR
137	CHERRY-BLACK	4	FAIR
138	CHERRY-BLACK	5	FAIR
139	CHERRY-BLACK	6	FAIR
140	CHERRY-BLACK	5	FAIR
141	MULBERRY-RED	3	FAIR
142	CHERRY-BLACK	5	FAIR
143	CHERRY-BLACK	3	FAIR
144	CHERRY-BLACK	18	FAIR
145	MULBERRY-RED	3	FAIR
146	CHERRY-BLACK	10	DEAD
147	HICKORY-SPP	10	FAIR
148	CHERRY-BLACK	3	FAIR
149	WALNUT-BLACK	5	FAIR
150	CHERRY-BLACK	20	FAIR
151	CHERRY-BLACK	4	FAIR
152	CHERRY-BLACK	3	FAIR
153	MAPLE-BOXELDER	14	FAIR
154	MULBERRY-RED	3	FAIR
155	CHERRY-BLACK	10	POOR
156	CHERRY-BLACK	8	DEAD
157	CHERRY-BLACK	24	FAIR
158	CHERRY-BLACK	8	FAIR
159	CHERRY-BLACK	10	POOR
160	CHERRY-BLACK	3	FAIR
161	CHERRY-BLACK	3	FAIR
162	CHERRY-BLACK	5	FAIR
163	WALNUT-BLACK	6	FAIR
164	WALNUT-BLACK	5	POOR
165	WALNUT-BLACK	7	POOR
166	WALNUT-BLACK	7	FAIR
167	WALNUT-BLACK	6	POOR
168	WALNUT-BLACK	8	POOR
169	MULBERRY-SPP	7	FAIR
170	WALNUT-BLACK	8	POOR
171	WALNUT-BLACK	4	POOR
172	WALNUT-BLACK	9	FAIR
173	CHERRY-BLACK	15	POOR
174	OAK-RED	10	FAIR
175	CHERRY-BLACK	14	POOR
176	CHERRY-BLACK	17	POOR
177	MULBERRY-SPP	5	POOR
178	CHERRY-BLACK	26	FAIR
179	CHERRY-BLACK	22	FAIR
180	CHERRY-BLACK	24	FAIR
181	CHERRY-BLACK	10	FAIR
182	CHERRY-BLACK	11	FAIR
183	WALNUT-BLACK	13	POOR
184	CHERRY-BLACK	13	FAIR
185	WALNUT-BLACK	5	POOR

186	CHERRY-BLACK	12	FAIR
187	CHERRY-BLACK	7	FAIR
188	MULBERRY-SPP	8	FAIR
189	CHERRY-BLACK	42	FAIR
190	CHERRY-BLACK	25	FAIR
191	CHERRY-BLACK	15	FAIR
192	CHERRY-BLACK	9	FAIR
193	UNKNOWN	22	FAIR
194	CHERRY-BLACK	10	FAIR
195	CHERRY-BLACK	20	FAIR
196	OAK-RED	10	FAIR
197	ASH-WHITE	7	POOR
198	OAK-RED	12	FAIR
199	ASPEN-QUAKING	14	FAIR
200	ASPEN-QUAKING	13	FAIR
201	ASPEN-QUAKING	13	FAIR
202	ASPEN-QUAKING	14	FAIR
203	OAK-RED	8	FAIR
204	OAK-RED	12	FAIR
205	OAK-RED	17	FAIR
206	CHERRY-BLACK	16	FAIR
207	CHERRY-BLACK	6	POOR
208	CHERRY-BLACK	4	POOR
209	CHERRY-BLACK	5	POOR
210	CHERRY-BLACK	16	POOR
211	CHERRY-BLACK	13	FAIR
212	OAK-RED	14	POOR
213	CHERRY-BLACK	23	FAIR
214	CHERRY-BLACK	39	FAIR
215	CHERRY-BLACK	23	FAIR
216	ELM-AMERICAN	8	FAIR
217	MULBERRY-SPP	12	FAIR
218	MULBERRY-SPP	5	POOR
219	MULBERRY-SPP	20	FAIR
220	MAPLE-BOXELDER	14	POOR
221	CHERRY-BLACK	21	FAIR
222	CHERRY-BLACK	14	FAIR
223	WALNUT-BLACK	14	FAIR
224	MULBERRY-SPP	6	POOR
225	CHERRY-BLACK	22	POOR
226	MULBERRY-SPP	6	POOR
227	WALNUT-BLACK	12	FAIR
228	CHERRY-BLACK	21	POOR
229	MULBERRY-SPP	9	POOR
230	CHERRY-BLACK	17	POOR
231	MULBERRY-SPP	8	FAIR
232	WALNUT-BLACK	7	POOR
233	MULBERRY-SPP	12	POOR
234	CHERRY-BLACK	12	POOR
235	CHERRY-BLACK	8	POOR
236	CHERRY-BLACK	16	POOR
237	MULBERRY-SPP	6	POOR
238	WALNUT-BLACK	6	POOR
239	WALNUT-BLACK	8	POOR
240	CEDAR-RED	5	FAIR
241	CHERRY-BLACK	3	FAIR
242	CHERRY-BLACK	11	POOR
243	CHERRY-BLACK	14	POOR
244	CHERRY-BLACK	11	POOR
245	ELM-AMERICAN	12	FAIR
246	MULBERRY-RED	3	FAIR
247	CHERRY-BLACK	11	DEAD

248	MULBERRY-RED	3	FAIR
249	CHERRY-BLACK	12	POOR
250	CHERRY-BLACK	12	POOR
251	CHERRY-BLACK	6	FAIR
252	CHERRY-BLACK	6	FAIR
253	CHERRY-BLACK	24	FAIR
254	PINE-SPP	11	DEAD
255	CHERRY-BLACK	16	FAIR
256	CHERRY-BLACK	14	POOR
257	CHERRY-BLACK	12	POOR
258	MULBERRY-RED	3	FAIR
259	OAK-RED	6	FAIR
260	CHERRY-BLACK	21	POOR
261	MAPLE-BOXELDER	19	FAIR
262	CHERRY-BLACK	28	GOOD
263	CHERRY-BLACK	28	FAIR
264	CHERRY-BLACK	21	GOOD
265	CHERRY-BLACK	12	GOOD
266	MAPLE-BOXELDER	5	FAIR
267	CHERRY-BLACK	4	FAIR
268	CHERRY-BLACK	18	FAIR
269	MULBERRY-RED	4	FAIR
270	MAPLE-BOXELDER	6	FAIR
271	CHERRY-BLACK	15	GOOD
272	CHERRY-BLACK	13	POOR
273	CHERRY-BLACK	19	POOR
274	CHERRY-BLACK	17	POOR
275	CHERRY-BLACK	16	FAIR
276	CHERRY-BLACK	13	POOR
277	CHERRY-BLACK	4	FAIR
278	CHERRY-BLACK	13	POOR
279	CHERRY-BLACK	12	FAIR
280	CHERRY-BLACK	18	POOR
281	OAK-WHITE	18	FAIR
282	CHERRY-BLACK	16	POOR
283	CHERRY-BLACK	7	FAIR
284	MAPLE-BOXELDER	14	FAIR
285	CHERRY-BLACK	32	GOOD
286	CHERRY-BLACK	12	POOR
287	MAPLE-BOXELDER	19	POOR
288	CHERRY-BLACK	19	POOR
289	ELM-AMERICAN	16	FAIR
290	WALNUT-BLACK	10	FAIR
291	MAPLE-BOXELDER	3	FAIR
292	MAPLE-BOXELDER	6	FAIR
293	OAK-RED	7	FAIR
294	ELM-AMERICAN	8	FAIR
295	OAK-RED	7	FAIR
296	OAK-RED	7	FAIR
297	MULBERRY-SPP	10	FAIR
298	MULBERRY-SPP	9	FAIR
299	CHERRY-BLACK	10	FAIR
300	MAPLE-BOXELDER	26	FAIR
301	CHERRY-BLACK	15	FAIR
302	CHERRY-BLACK	20	POOR
303	CHERRY-BLACK	24	FAIR
304	MULBERRY-RED	7	FAIR
305	CHERRY-BLACK	28	FAIR
306	MULBERRY-RED	6	FAIR
307	MULBERRY-SPP	10	POOR
308	CHERRY-BLACK	12	DEAD
309	CHERRY-BLACK	12	FAIR

310	MAPLE-BOXELDER	6	FAIR
311	CHERRY-BLACK	3	FAIR
312	OAK-RED	11	POOR
313	OAK-RED	6	POOR
314	MULBERRY-SPP	8	POOR
315	CHERRY-BLACK	8	FAIR
316	OAK-RED	8	POOR
317	CHERRY-BLACK	4	FAIR
318	OAK-RED	5	POOR
319	CHERRY-BLACK	5	POOR
320	OAK-RED	10	POOR
321	CHERRY-BLACK	10	FAIR
322	OAK-RED	5	POOR
323	CHERRY-BLACK	14	FAIR
324	OAK-RED	12	FAIR
325	CHERRY-BLACK	6	POOR
326	OAK-RED	7	FAIR
327	CHERRY-BLACK	23	FAIR
328	CHERRY-BLACK	14	FAIR
329	WALNUT-BLACK	9	POOR
330	OAK-RED	4	POOR
331	CHERRY-BLACK	9	FAIR
332	OAK-RED	8	POOR
333	OAK-RED	11	FAIR
334	OAK-RED	4	POOR
335	CHERRY-BLACK	18	FAIR
336	CHERRY-BLACK	30	GOOD
337	MULBERRY-RED	3	FAIR
338	CHERRY-BLACK	6	FAIR
339	WALNUT-BLACK	4	FAIR
340	CHERRY-BLACK	26	FAIR
341	CHERRY-BLACK	12	POOR
342	CHERRY-BLACK	19	FAIR
343	CHERRY-BLACK	29	GOOD
344	MAPLE-BOXELDER	6	FAIR
345	UNKNOWN	12	DEAD
346	CHERRY-BLACK	7	FAIR
347	CHERRY-BLACK	11	FAIR
348	MULBERRY-RED	3	FAIR
349	CHERRY-BLACK	9	FAIR
350	CHERRY-BLACK	29	GOOD
351	CHERRY-BLACK	10	FAIR
352	CHERRY-BLACK	10	FAIR
353	CHERRY-BLACK	25	FAIR
354	CHERRY-BLACK	8	POOR
355	MULBERRY-RED	4	FAIR
356	CHERRY-BLACK	7	FAIR
357	CHERRY-BLACK	4	FAIR
358	CHERRY-BLACK	7	FAIR
359	CHERRY-BLACK	12	FAIR
360	CHERRY-BLACK	15	FAIR
361	OAK-RED	6	FAIR
362	CHERRY-BLACK	27	FAIR
363	CHERRY-BLACK	13	FAIR
364	CHERRY-BLACK	13	POOR
365	CHERRY-BLACK	6	POOR
366	CHERRY-BLACK	12	FAIR
367	CHERRY-BLACK	8	FAIR
368	WALNUT-BLACK	6	POOR
369	CHERRY-BLACK	26	FAIR
370	CHERRY-BLACK	11	FAIR
371	CHERRY-BLACK	3	FAIR

372	CHERRY-BLACK	9	FAIR
373	CHERRY-BLACK	25	GOOD
374	UNKNOWN	9	DEAD
375	CHERRY-BLACK	17	GOOD
376	MULBERRY-SPP	8	FAIR
377	CHERRY-BLACK	14	GOOD
378	CHERRY-BLACK	15	FAIR
379	CHERRY-BLACK	14	GOOD
380	CHERRY-BLACK	17	POOR
381	CHERRY-BLACK	13	POOR
382	CHERRY-BLACK	10	POOR
383	CHERRY-BLACK	9	FAIR
384	CHERRY-BLACK	6	FAIR
385	CHERRY-BLACK	10	POOR
386	CHERRY-BLACK	30	FAIR
387	CHERRY-BLACK	10	FAIR
388	CHERRY-BLACK	23	POOR
389	CHERRY-BLACK	14	FAIR
390	CHERRY-BLACK	10	POOR
391	CHERRY-BLACK	23	POOR
392	MAPLE-BOXELDER	5	POOR
393	CHERRY-BLACK	15	GOOD
394	CHERRY-BLACK	21	GOOD
395	CHERRY-BLACK	14	FAIR
396	CHERRY-BLACK	19	GOOD
397	CHERRY-BLACK	16	DEAD
398	CHERRY-BLACK	19	GOOD
399	CHERRY-BLACK	32	GOOD
400	CHERRY-BLACK	10	FAIR
401	CHERRY-BLACK	12	POOR
402	CHERRY-BLACK	11	GOOD
403	CHERRY-BLACK	10	FAIR
404	CHERRY-BLACK	13	POOR
405	CHERRY-BLACK	11	FAIR
406	CHERRY-BLACK	11	FAIR
407	CHERRY-BLACK	27	GOOD
408	CHERRY-BLACK	11	POOR
409	CHERRY-BLACK	15	FAIR
410	WALNUT-BLACK	13	FAIR
411	CHERRY-BLACK	12	GOOD
412	CHERRY-BLACK	14	POOR
413	CHERRY-BLACK	26	FAIR
414	CHERRY-BLACK	13	FAIR
415	CHERRY-BLACK	21	FAIR
416	MULBERRY-SPP	8	FAIR
417	CHERRY-BLACK	22	FAIR
418	CHERRY-BLACK	8	FAIR
419	CHERRY-BLACK	14	GOOD
420	CHERRY-BLACK	18	FAIR
421	CHERRY-BLACK	11	FAIR
422	CHERRY-BLACK	9	FAIR
423	CHERRY-BLACK	17	FAIR
424	CHERRY-BLACK	8	DEAD
425	CHERRY-BLACK	8	FAIR
426	CHERRY-BLACK	12	FAIR
427	CHERRY-BLACK	7	POOR
428	CHERRY-BLACK	9	POOR
429	CHERRY-BLACK	41	GOOD
430	CHERRY-BLACK	23	FAIR
431	CHERRY-BLACK	12	GOOD
432	CHERRY-BLACK	26	GOOD
433	CHERRY-BLACK	14	FAIR

434	CHERRY-BLACK	20	FAIR
435	CHERRY-BLACK	8	FAIR
436	CHERRY-BLACK	20	FAIR
437	CHERRY-BLACK	15	FAIR
438	CHERRY-BLACK	18	POOR
439	CHERRY-BLACK	11	FAIR
440	CHERRY-BLACK	21	FAIR
441	CHERRY-BLACK	13	FAIR
442	CHERRY-BLACK	18	FAIR
443	CHERRY-BLACK	13	FAIR
444	CHERRY-BLACK	16	POOR
445	CHERRY-BLACK	13	POOR
446	CHERRY-BLACK	10	FAIR
447	CHERRY-BLACK	9	FAIR
448	CHERRY-BLACK	12	FAIR
449	CHERRY-BLACK	25	GOOD
450	CHERRY-BLACK	14	FAIR
451	MAPLE-BOXELDER	10	POOR
452	CHERRY-BLACK	19	FAIR
453	MAPLE-BOXELDER	22	POOR
454	CHERRY-BLACK	20	GOOD
455	CHERRY-BLACK	28	FAIR
456	OAK-RED	33	GOOD
457	CHERRY-BLACK	14	POOR
458	CHERRY-BLACK	22	FAIR
459	CHERRY-BLACK	17	FAIR
460	CHERRY-BLACK	18	POOR
461	WALNUT-BLACK	10	POOR
462	CHERRY-BLACK	23	POOR
463	CHERRY-BLACK	14	POOR
464	CHERRY-BLACK	24	POOR
465	CHERRY-BLACK	11	DEAD
466	CHERRY-BLACK	16	POOR
467	CHERRY-BLACK	26	GOOD
468	MULBERRY-SPP	9	FAIR
469	ELM-SPP	7	POOR
470	OAK-RED	14	FAIR
471	CHERRY-BLACK	12	FAIR
472	CHERRY-BLACK	9	FAIR
473	CHERRY-BLACK	12	FAIR
474	CHERRY-BLACK	7	FAIR
475	CHERRY-BLACK	21	FAIR
476	CHERRY-BLACK	11	FAIR
477	OAK-RED	26	FAIR
478	CHERRY-BLACK	12	GOOD
479	CHERRY-BLACK	33	GOOD
480	CHERRY-BLACK	20	GOOD
481	CHERRY-BLACK	12	DEAD
482	WALNUT-BLACK	10	FAIR
483	OAK-RED	3	POOR
484	MULBERRY-SPP	4	POOR
485	CHERRY-BLACK	23	FAIR
486	CHERRY-BLACK	12	POOR
487	CHERRY-BLACK	15	GOOD
488	CHERRY-BLACK	12	FAIR
489	OAK-RED	12	POOR
490	CHERRY-BLACK	5	POOR
491	CHERRY-BLACK	13	FAIR
492	CHERRY-BLACK	20	FAIR
493	CHERRY-BLACK	16	FAIR
494	CHERRY-BLACK	14	GOOD
495	UNKNOWN	18	DEAD

496	CHERRY-BLACK	9	POOR
497	CHERRY-BLACK	12	GOOD
498	CHERRY-BLACK	14	FAIR
499	CHERRY-BLACK	15	FAIR
500	CHERRY-BLACK	15	FAIR
501	CHERRY-BLACK	30	FAIR
502	WALNUT-BLACK	6	FAIR
503	CHERRY-BLACK	18	FAIR
504	CHERRY-BLACK	14	FAIR
505	CHERRY-BLACK	13	FAIR
506	CHERRY-BLACK	13	FAIR
507	CHERRY-BLACK	7	FAIR
508	CHERRY-BLACK	10	FAIR
509	CHERRY-BLACK	5	POOR
510	CHERRY-BLACK	9	FAIR
511	CHERRY-BLACK	11	FAIR
512	MULBERRY-SPP	11	FAIR