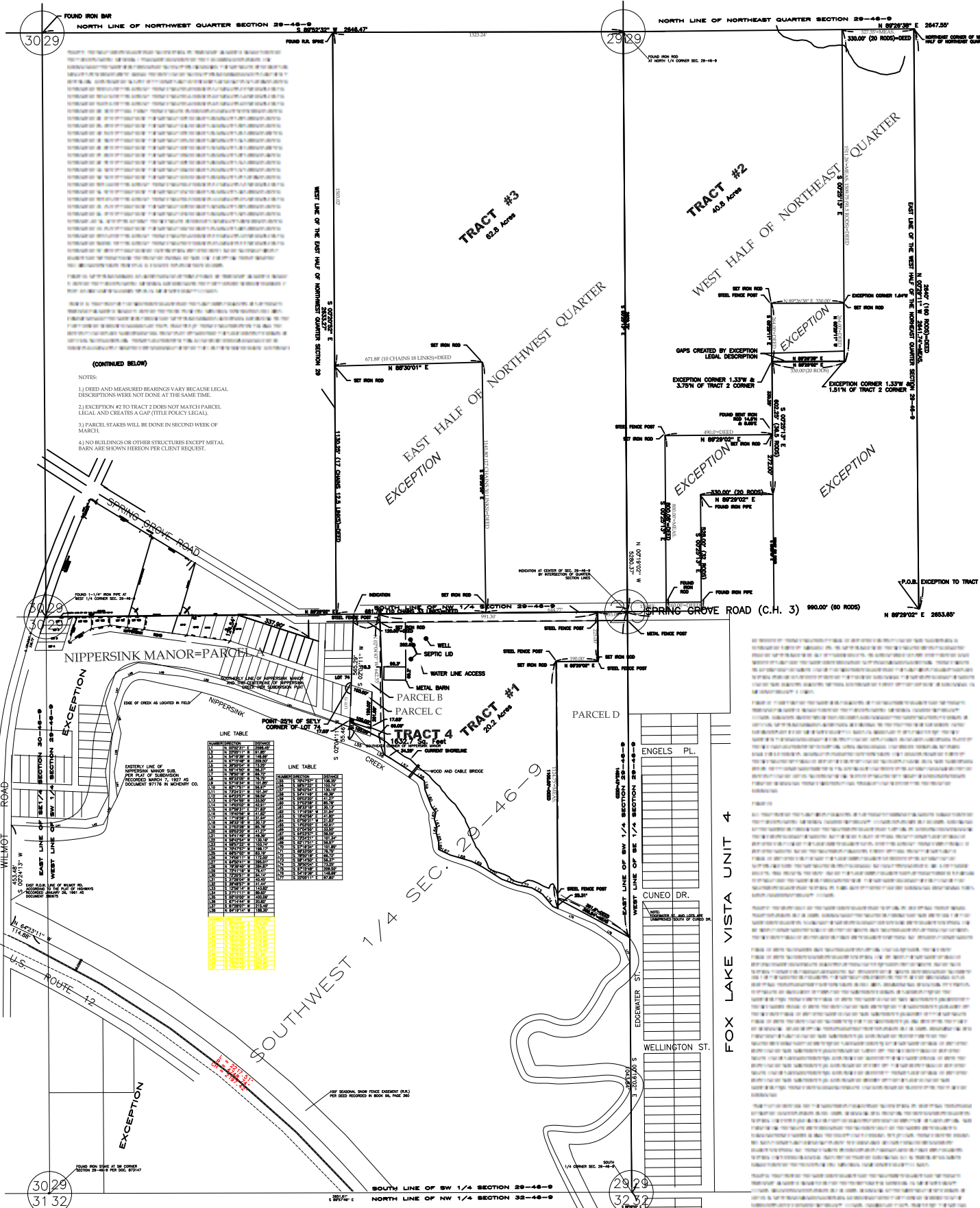


ZAHN & ASSOCIATES
 LAND SURVEYORS
 7514 BEVERLY WAY
 SPRING GROVE, IL 60081
 (815) 675-2774
 D.F.P.R. #184003386

PLAT OF SURVEY



(CONTINUED BELOW)
 NOTES:
 1) DEED AND MEASURED BEARINGS VARY BECAUSE LEGAL DESCRIPTIONS WERE NOT DONE AT THE SAME TIME.
 2) EXCEPTION #2 TO TRACT 2 DOES NOT MATCH PARCEL LEGAL AND CREATES A GAP/TITLE POLICY LEGAL.
 3) PARCEL STAKES WILL BE DONE IN SECOND WEEK OF MARCH.
 4) NO BUILDINGS OR OTHER STRUCTURES EXCEPT METAL BARN ARE SHOWN HEREON PER CLIENT REQUEST.

LINE TABLE

LINE NO.	BEARING	DISTANCE	REMARKS
1	N 89°22'02" E	2653.60'	FOUND IRON PIPE
2	S 89°22'02" W	990.00'	(60 ROADS)
3	N 89°22'02" E	2653.60'	FOUND IRON PIPE
4	S 89°22'02" W	990.00'	(60 ROADS)
5	N 89°22'02" E	2653.60'	FOUND IRON PIPE
6	S 89°22'02" W	990.00'	(60 ROADS)
7	N 89°22'02" E	2653.60'	FOUND IRON PIPE
8	S 89°22'02" W	990.00'	(60 ROADS)
9	N 89°22'02" E	2653.60'	FOUND IRON PIPE
10	S 89°22'02" W	990.00'	(60 ROADS)
11	N 89°22'02" E	2653.60'	FOUND IRON PIPE
12	S 89°22'02" W	990.00'	(60 ROADS)
13	N 89°22'02" E	2653.60'	FOUND IRON PIPE
14	S 89°22'02" W	990.00'	(60 ROADS)
15	N 89°22'02" E	2653.60'	FOUND IRON PIPE
16	S 89°22'02" W	990.00'	(60 ROADS)
17	N 89°22'02" E	2653.60'	FOUND IRON PIPE
18	S 89°22'02" W	990.00'	(60 ROADS)
19	N 89°22'02" E	2653.60'	FOUND IRON PIPE
20	S 89°22'02" W	990.00'	(60 ROADS)
21	N 89°22'02" E	2653.60'	FOUND IRON PIPE
22	S 89°22'02" W	990.00'	(60 ROADS)
23	N 89°22'02" E	2653.60'	FOUND IRON PIPE
24	S 89°22'02" W	990.00'	(60 ROADS)
25	N 89°22'02" E	2653.60'	FOUND IRON PIPE
26	S 89°22'02" W	990.00'	(60 ROADS)
27	N 89°22'02" E	2653.60'	FOUND IRON PIPE
28	S 89°22'02" W	990.00'	(60 ROADS)
29	N 89°22'02" E	2653.60'	FOUND IRON PIPE
30	S 89°22'02" W	990.00'	(60 ROADS)
31	N 89°22'02" E	2653.60'	FOUND IRON PIPE
32	S 89°22'02" W	990.00'	(60 ROADS)
33	N 89°22'02" E	2653.60'	FOUND IRON PIPE
34	S 89°22'02" W	990.00'	(60 ROADS)
35	N 89°22'02" E	2653.60'	FOUND IRON PIPE
36	S 89°22'02" W	990.00'	(60 ROADS)
37	N 89°22'02" E	2653.60'	FOUND IRON PIPE
38	S 89°22'02" W	990.00'	(60 ROADS)
39	N 89°22'02" E	2653.60'	FOUND IRON PIPE
40	S 89°22'02" W	990.00'	(60 ROADS)
41	N 89°22'02" E	2653.60'	FOUND IRON PIPE
42	S 89°22'02" W	990.00'	(60 ROADS)
43	N 89°22'02" E	2653.60'	FOUND IRON PIPE
44	S 89°22'02" W	990.00'	(60 ROADS)
45	N 89°22'02" E	2653.60'	FOUND IRON PIPE
46	S 89°22'02" W	990.00'	(60 ROADS)
47	N 89°22'02" E	2653.60'	FOUND IRON PIPE
48	S 89°22'02" W	990.00'	(60 ROADS)
49	N 89°22'02" E	2653.60'	FOUND IRON PIPE
50	S 89°22'02" W	990.00'	(60 ROADS)
51	N 89°22'02" E	2653.60'	FOUND IRON PIPE
52	S 89°22'02" W	990.00'	(60 ROADS)
53	N 89°22'02" E	2653.60'	FOUND IRON PIPE
54	S 89°22'02" W	990.00'	(60 ROADS)
55	N 89°22'02" E	2653.60'	FOUND IRON PIPE
56	S 89°22'02" W	990.00'	(60 ROADS)
57	N 89°22'02" E	2653.60'	FOUND IRON PIPE
58	S 89°22'02" W	990.00'	(60 ROADS)
59	N 89°22'02" E	2653.60'	FOUND IRON PIPE
60	S 89°22'02" W	990.00'	(60 ROADS)
61	N 89°22'02" E	2653.60'	FOUND IRON PIPE
62	S 89°22'02" W	990.00'	(60 ROADS)
63	N 89°22'02" E	2653.60'	FOUND IRON PIPE
64	S 89°22'02" W	990.00'	(60 ROADS)
65	N 89°22'02" E	2653.60'	FOUND IRON PIPE
66	S 89°22'02" W	990.00'	(60 ROADS)
67	N 89°22'02" E	2653.60'	FOUND IRON PIPE
68	S 89°22'02" W	990.00'	(60 ROADS)
69	N 89°22'02" E	2653.60'	FOUND IRON PIPE
70	S 89°22'02" W	990.00'	(60 ROADS)
71	N 89°22'02" E	2653.60'	FOUND IRON PIPE
72	S 89°22'02" W	990.00'	(60 ROADS)
73	N 89°22'02" E	2653.60'	FOUND IRON PIPE
74	S 89°22'02" W	990.00'	(60 ROADS)
75	N 89°22'02" E	2653.60'	FOUND IRON PIPE
76	S 89°22'02" W	990.00'	(60 ROADS)
77	N 89°22'02" E	2653.60'	FOUND IRON PIPE
78	S 89°22'02" W	990.00'	(60 ROADS)
79	N 89°22'02" E	2653.60'	FOUND IRON PIPE
80	S 89°22'02" W	990.00'	(60 ROADS)
81	N 89°22'02" E	2653.60'	FOUND IRON PIPE
82	S 89°22'02" W	990.00'	(60 ROADS)
83	N 89°22'02" E	2653.60'	FOUND IRON PIPE
84	S 89°22'02" W	990.00'	(60 ROADS)
85	N 89°22'02" E	2653.60'	FOUND IRON PIPE
86	S 89°22'02" W	990.00'	(60 ROADS)
87	N 89°22'02" E	2653.60'	FOUND IRON PIPE
88	S 89°22'02" W	990.00'	(60 ROADS)
89	N 89°22'02" E	2653.60'	FOUND IRON PIPE
90	S 89°22'02" W	990.00'	(60 ROADS)
91	N 89°22'02" E	2653.60'	FOUND IRON PIPE
92	S 89°22'02" W	990.00'	(60 ROADS)
93	N 89°22'02" E	2653.60'	FOUND IRON PIPE
94	S 89°22'02" W	990.00'	(60 ROADS)
95	N 89°22'02" E	2653.60'	FOUND IRON PIPE
96	S 89°22'02" W	990.00'	(60 ROADS)
97	N 89°22'02" E	2653.60'	FOUND IRON PIPE
98	S 89°22'02" W	990.00'	(60 ROADS)
99	N 89°22'02" E	2653.60'	FOUND IRON PIPE
100	S 89°22'02" W	990.00'	(60 ROADS)

THE BEARING AND DISTANCE OF EACH LINE AND THE BEARING AND DISTANCE OF EACH CURVE ARE CALCULATED FROM THE BEARING AND DISTANCE OF THE PREVIOUS LINE OR CURVE. THE BEARING AND DISTANCE OF EACH LINE AND THE BEARING AND DISTANCE OF EACH CURVE ARE CALCULATED FROM THE BEARING AND DISTANCE OF THE PREVIOUS LINE OR CURVE. THE BEARING AND DISTANCE OF EACH LINE AND THE BEARING AND DISTANCE OF EACH CURVE ARE CALCULATED FROM THE BEARING AND DISTANCE OF THE PREVIOUS LINE OR CURVE.

THE BEARING AND DISTANCE OF EACH LINE AND THE BEARING AND DISTANCE OF EACH CURVE ARE CALCULATED FROM THE BEARING AND DISTANCE OF THE PREVIOUS LINE OR CURVE. THE BEARING AND DISTANCE OF EACH LINE AND THE BEARING AND DISTANCE OF EACH CURVE ARE CALCULATED FROM THE BEARING AND DISTANCE OF THE PREVIOUS LINE OR CURVE. THE BEARING AND DISTANCE OF EACH LINE AND THE BEARING AND DISTANCE OF EACH CURVE ARE CALCULATED FROM THE BEARING AND DISTANCE OF THE PREVIOUS LINE OR CURVE.

THE BEARING AND DISTANCE OF EACH LINE AND THE BEARING AND DISTANCE OF EACH CURVE ARE CALCULATED FROM THE BEARING AND DISTANCE OF THE PREVIOUS LINE OR CURVE. THE BEARING AND DISTANCE OF EACH LINE AND THE BEARING AND DISTANCE OF EACH CURVE ARE CALCULATED FROM THE BEARING AND DISTANCE OF THE PREVIOUS LINE OR CURVE. THE BEARING AND DISTANCE OF EACH LINE AND THE BEARING AND DISTANCE OF EACH CURVE ARE CALCULATED FROM THE BEARING AND DISTANCE OF THE PREVIOUS LINE OR CURVE.

AMENDED 2/25/2022
 AMENDED 2/28/2022
 AMENDED 3/1/2022
 CLIENT: KATTNER
 DRAWN BY: G.D. CHECKED BY: P.E.
 SCALE: 1" = 200'
 JOB NUMBER: 2022-018
 P.L.



SURVEYOR'S CERTIFICATE
 STATE OF ILLINOIS)
 COUNTY OF MCHIGAN) S.S.
 I, ZAHN & ASSOCIATES, LAND SURVEYORS, A PROFESSIONAL SERVICE CORPORATION, DO HEREBY CERTIFY THAT I HAVE PERSONALLY AND INDIVIDUALLY EXAMINED THE SURVEY AND THE INSTRUMENTS USED THEREIN AND THAT I AM A LICENSED PROFESSIONAL LAND SURVEYOR IN THE STATE OF ILLINOIS, LICENSE NO. 0203, AND THAT I AM NOT PROVIDING THIS SERVICE AS AN EMPLOYEE OR AGENT OF ANY OTHER PERSON OR ENTITY.
 ILLINOIS PROFESSIONAL LAND SURVEYOR NO. 0203

