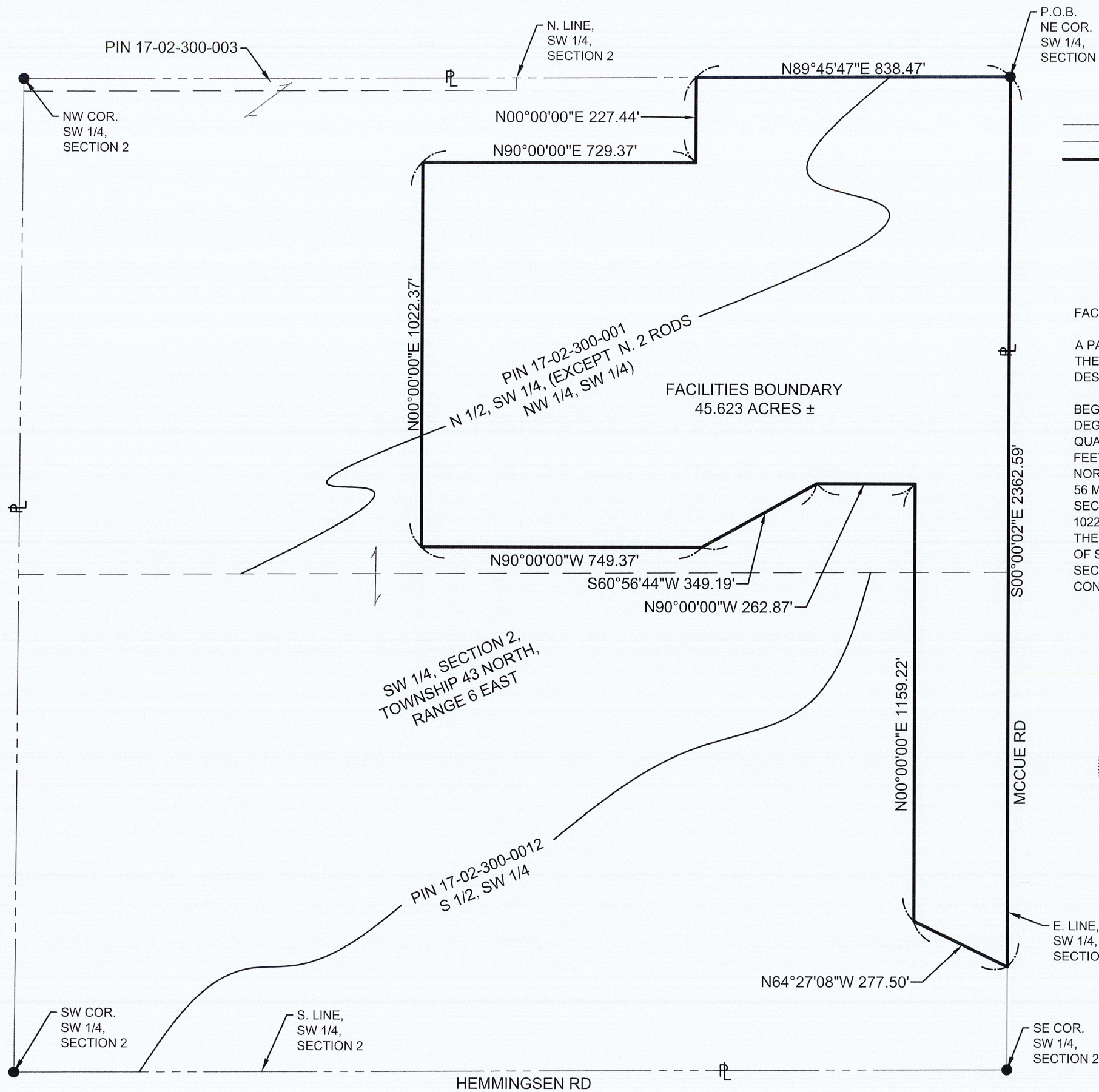
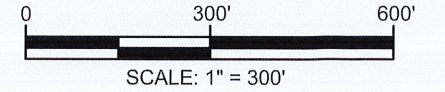


TROLLEY COACH SOLAR - FACILITIES BOUNDARY



LEGEND

	PARCEL LINE
	SECTION LINE
	FACILITIES BOUNDARY
	POINT OF BEGINNING



FACILITIES BOUNDARY DESCRIPTION

A PART OF THE SOUTHWEST QUARTER OF SECTION 2, TOWNSHIP-43-NORTH, RANGE-6-EAST OF THE THIRD PRINCIPAL MERIDIAN, MC HENRY COUNTY, ILLINOIS BEING MORE PARTICULARLY DESCRIBED AS FOLLOWS:

BEGINNING AT THE NORTHEAST CORNER OF SAID SOUTHWEST QUARTER; THENCE SOUTH 00 DEGREES 00 MINUTES 02 SECONDS EAST, ALONG THE EAST LINE OF SAID SOUTHWEST QUARTER, 2362.59 FEET; THENCE NORTH 64 DEGREES, 27 MINUTES, 08 SECONDS WEST, 277.50 FEET; THENCE NORTH 00 DEGREES 00 MINUTES 00 SECONDS EAST, 1159.22 FEET; THENCE NORTH 90 DEGREES 00 MINUTES 00 SECONDS WEST, 262.87 FEET; THENCE SOUTH 60 DEGREES 56 MINUTES 44 SECONDS WEST, 349.19 FEET; THENCE NORTH 90 DEGREES 00 MINUTES 00 SECONDS WEST, 749.37 FEET; THENCE NORTH 00 DEGREES 00 MINUTES 00 SECONDS EAST, 1022.37 FEET; THENCE NORTH 90 DEGREES 00 MINUTES 00 SECONDS EAST, 729.37 FEET; THENCE NORTH 00 DEGREES 00 MINUTES 00 SECONDS EAST, 227.44 FEET TO THE NORTH LINE OF SAID SOUTHWEST QUARTER SECTION; THENCE NORTH 89 DEGREES 45 MINUTES 47 SECONDS EAST ALONG SAID NORTH LINE, 838.47 FEET TO THE POINT OF BEGINNING, CONTAINING 45.623 ACRES, MORE OR LESS.

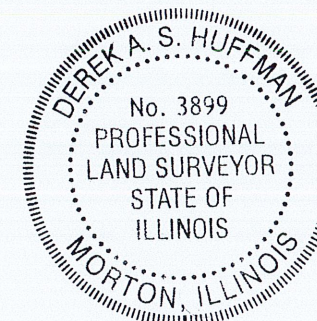
WE, MILLENNIA PROFESSIONAL SERVICES, HEREBY CERTIFY THAT THIS EXHIBIT IS AN ACCURATE REPRESENTATION OF A SURVEY MADE UNDER MY DIRECT SUPERVISION FOR THE EXCLUSIVE BENEFIT OF TROLLEY COACH SOLAR, LLC.

Derek A. S. Huffman 4-15-2025

DEREK A.S. HUFFMAN
ILLINOIS PROFESSIONAL LAND SURVEYOR
LICENSE NUMBER 35-3899
MY LICENSE EXPIRES 11/30/2026

NOTES:

1. BEARINGS SHOWN HEREON ARE BASED ON THE ILLINOIS STATE PLANE COORDINATE SYSTEM. NAD 83-EAST ZONE.
2. FIELD WORK COMPLETED MARCH 2025.
3. FACILITIES BOUNDARY IS A PART OF PINS 17-02-300-001 & 17-02-300-002.
4. FACILITIES BOUNDARY AREA = 45.623 ACRES ±



FACILITIES BOUNDARY

A PART OF THE SOUTHWEST QUARTER OF SECTION 2, TOWNSHIP-43-NORTH, RANGE-6-EAST OF THE THIRD PRINCIPAL MERIDIAN, MC HENRY COUNTY, ILLINOIS

CLIENT:
TROLLEY COACH SOLAR, LLC



850 NORTH MAIN STREET, MORTON, IL 61550
309.321.8141 VOICE, 309.321.8142 FAX
WWW.MILLENNIA.PRO

MILLENNIA PROFESSIONAL SERVICES

IT IS NOT WARRANTED THAT THIS EXHIBIT CONTAINS COMPLETE INFORMATION REGARDING EASEMENTS, RESERVATIONS, RESTRICTIONS, RIGHTS OF WAY, BUILDING LINES, ENCROACHMENTS, OR OTHER ENCUMBRANCES. FOR COMPLETE INFORMATION, A TITLE OPINION OR COMMITMENT FOR TITLE INSURANCE SHOULD BE OBTAINED.